



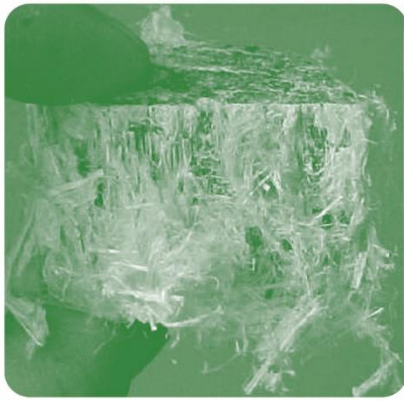
## **ASBESTOS TRAINING PROSPECTUS 2022**





## CONTENTS

|  |    |
|--|----|
| ASBESTOS AWARENESS                           | 3  |
| LATEST TECHNIQUES IN ASBESTOS MANAGEMENT     | 4  |
| MANAGING ASBESTOS IN THE WORKPLACE           | 5  |
| MANAGING ASBESTOS IN HEALTHCARE ENVIRONMENTS | 6  |
| MANAGING ASBESTOS IN SCHOOLS                 | 7  |
| MANAGING ASBESTOS IN SOCIAL HOUSING          | 8  |
| HOW TO SAVE A SMALL FORTUNE ON ASBESTOS      | 9  |
| OUR PRESENTERS                               | 10 |
| ABOUT US                                     | 11 |



## ASBESTOS AWARENESS

**WHO SHOULD ATTEND:** Anyone who could potentially disturb asbestos containing materials (ACMs) e.g. building contractors, electricians, plumbers, maintenance staff, Facilities Managers etc.

**WHAT DELEGATES WILL LEARN:** Properties & uses of asbestos, where it can be found, how to identify it, the risks and health effects, overview of legislation

**TOPICS INCLUDE:**

- Different types and properties of asbestos
- Where it is typically found
- How to identify it
- The risks of exposure
- The legal context
- Asbestos and CDM Regulations
- Emergency procedures
- Recent case studies

**DURATION:** ½ day

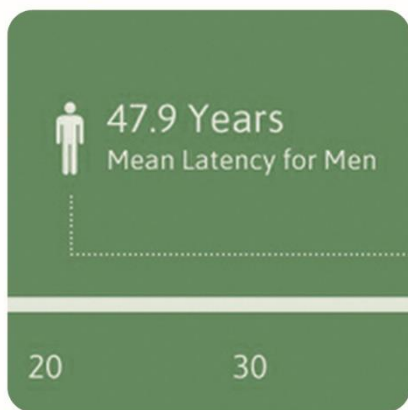
**CPD POINTS:** 2

**CERTIFICATE OF ATTENDANCE:** Yes

**PRESENTER:** Michael Gunn

**DATES:** On application

**COST:** Free (clients) - £250 (Non-clients)



## LATEST TECHNIQUES IN ASBESTOS MANAGEMENT

**WHO SHOULD ATTEND:** Health & Safety practitioners, Estates/Facilities Managers, Principal Designers, Contractors

**WHAT DELEGATES WILL LEARN:** The very latest developments in asbestos management including current stats on exposure and mortality,

**TOPICS INCLUDE:**

- The dangers and risks of exposure
- Asbestos applications
- The legal context
- Management Plans
- Asbestos in building works and maintenance
- Asbestos and RIDDOR
- Enforcement - case studies re fines, compensation and reputational costs

**DURATION:** ½ day

**CPD POINTS:** 2

**CERTIFICATE OF ATTENDANCE:** Yes

**PRESENTER:** Paul Scholes

**DATES:** On application

**COST:** Free (clients) - £250 (Non-clients)



## MANAGING ASBESTOS IN THE WORKPLACE

**WHO SHOULD ATTEND:** Landlords, leaseholders, Housing Associations, Facilities Managers, employers, health and safety personnel

**WHAT DELEGATES WILL LEARN:** What responsibilities a dutyholder has, where to find and how to identify asbestos containing material and what to do in the event that it is discovered on the premises

### TOPICS INCLUDE:

- What is asbestos
- History of asbestos use
- Different types and properties of asbestos
- Where it is typically found and how to identify it
- The risks of exposure
- The legal context
- Recent case studies
- Dutyholders responsibilities
- Survey types and scopes
- What to do if you find asbestos
- Priority Risk Assessments
- Developing a Management Plan

**DURATION:** 1 day

**CPD POINTS:** 4

**CERTIFICATE OF ATTENDANCE:** Yes

**PRESENTER:** Paul Clarke-Scholes

**DATES:** On application

**COST:** £250 (clients) - £450 (Non-clients)





## MANAGING ASBESTOS IN HEALTHCARE ENVIRONMENTS

**WHO SHOULD ATTEND:** Estates/Facilities Managers, Capital Project Managers, Health & Safety Professionals, CDM Coordinators

**WHAT DELEGATES WILL LEARN:** The legal responsibilities to manage asbestos, the impact that planning for asbestos at the initial stages of building projects can have on reducing costs and programme while minimising inconvenience to staff, patients and visitors

### TOPICS INCLUDE:

- How to prepare an asbestos management plan
- Legal responsibilities for managing asbestos
- How to reduce costs and delays to programme
- Typical places in healthcare premises that asbestos is found
- How to plan surveys and removal works to minimise disruption
- Key criteria for selecting a contractor
- Techniques to minimise damage during surveying and removal
- How to interpret survey reports
- Latest HSE guidance on exemptions for non-licensable work, waivers and workplans
- Managing communications with staff, patients and the public
- Emergency plans

**DURATION:** ½ day

**CPD POINTS:** 2

**CERTIFICATE OF ATTENDANCE:** Yes

**PRESENTER:** Paul Clarke-Scholes

**DATES:** On application

**COST:** Free (clients) - £250 (Non-clients)



## MANAGING ASBESTOS IN SCHOOLS

**WHO SHOULD ATTEND:** Head Teachers, Caretakers, Business Managers, Facilities Managers, H&S Professionals,

**WHAT DELEGATES WILL LEARN:** Who is responsible for asbestos management and how these responsibilities should be discharged - illustrated with practical examples and case studies

**TOPICS INCLUDE:**

- Who is responsible for asbestos?
- Dutyholders' responsibilities
- Where asbestos is found in schools?
- Asbestos & the law
- Why asbestos is a particularly prevalent and emotive issue in schools
- Preparing an asbestos management plan
- How to compile an asbestos register
- How to facilitate safe maintenance and refurbishment
- Emergency plans
- Enforcement and case studies

**DURATION:** ½ day

**CPD POINTS:** 2

**CERTIFICATE OF ATTENDANCE:** Yes

**PRESENTER:** Paul Clarke-Scholes

**DATES:** On application

**COST:** Free (clients) - £250 (Non-clients)



## MANAGING ASBESTOS IN SOCIAL HOUSING

**WHO SHOULD ATTEND:** Project Managers, Contracts Managers, Quantity Surveyors, Compliance Officers, Sub-contractors, Facilities Managers

**WHAT DELEGATES WILL LEARN:** The impact that planning for asbestos at the initial stages can have on reducing costs and programme and will also reveal specific procedures to limit inconvenience to residents and protect the safety of operatives

### TOPICS INCLUDE:

- The value and responsibilities for planning asbestos during initial stages of projects
- How to reduce costs and delays to programme
- Techniques to minimise damage to properties during surveying and removal
- Methods to minimise operatives' and occupants' exposure to asbestos
- Clarification of exemptions re non-licensable work
- Changes to guidance on waivers
- Key aspects of HSE guidance (HSG 248, HSG 264 and ACoP L143) that relate to social housing projects
- The role of the HSE
- Best practice in removing external asbestos
- The typical places in social housing that asbestos is found
- How to reduce complaints and enhance resident satisfaction

**DURATION:** ½ day

**CPD POINTS:** 2

**CERTIFICATE OF ATTENDANCE:** Yes

**PRESENTER:** Paul Clarke-Scholes

**DATES:** On application

**COST:** Free (clients) - £250 (Non-clients)





## HOW TO SAVE A SMALL FORTUNE ON ASBESTOS

**WHO SHOULD ATTEND:** Cost Consultants, Quantity Surveyors, Project Managers, Property/Asset Managers, CDM Coordinators

**WHAT DELEGATES WILL LEARN:** 10 tips/trade secrets to help them save costs on asbestos surveying, air testing and removals

**TOPICS INCLUDE:**

- How to reduce costs by 30% by claiming corporation tax relief
- Ways to limit damage during surveys/removals
- Information to share with the consultant
- How to provide more cost certainty
- Methods to minimise survey exclusions and avoid 'out of hours' work
- How Priority Risk Assessments and remediation specifications can reduce removal costs
- Planning-in contingencies
- Ways to reduce spend on air testing

**DURATION:** 1 hour

**CPD POINTS:** 1

**CERTIFICATE OF ATTENDANCE:** Yes

**PRESENTER:** Paul Clarke-Scholes

**DATES:** On application

**COST:** Free



## OUR PRESENTERS



### PAUL CLARKE-SCHOLES

Paul has over 33 years' experience in the asbestos sector and has project-managed complex decontamination projects for key developments in London. In that time he has gained a comprehensive knowledge of the issues and legislation relevant to remediating asbestos from commercial, residential and public sector properties as a consultant and working for licenced contractors.

Paul is a Chartered Member of the Institution of Safety and Health (CMIOSH) and of the Faculty for Asbestos Assessment and Management (MFAAM)



### PAUL RIDING

Paul joined Global in October 2017 and has a wealth of experience in the asbestos industry having gained practical experience of all disciplines from asbestos removal to air testing and surveying.

He started as Removals Supervisor with Forest Environmental in 2001, was then promoted to Removals Contracts Manager and then after a year in USA returned as Operations Manager. As a Project Manager, Paul manages the full mix of work including surveying, overseeing removal and quality reviewing.



### MICHAEL GUNN

Mike oversees all of Global Environmental's surveying work, monitoring the projects and contracts and the overall output of the company. He has worked in the asbestos sector since 2002. He joined Global in January 2018 from Adamsons Laboratory Services where, latterly, he was a Quality Manager.

Previously he worked at Thames Laboratories and Mackenzie Asbestos Environmental Consultants in the roles of surveyor, in the lab and as a Regional Manager. Mike holds P401-405.



## ABOUT US

Established in 2001, Global Environmental provides a comprehensive range of asbestos management services to help public and private sector clients to manage their duty of care responsibilities and comply with the Control of Asbestos Regulations 2012.

The company, which operates from its Head Office in Central London and Branch office in Hertfordshire has expanded rapidly in the last six years and now has an established client-base and experience of providing consultancy for all types of property from residential to commercial, municipal, healthcare, education and industrial buildings.

Clients include property developers, contractors, building consultancies, Housing Associations, Local Authorities and other public sector organisations.

Services include:

- Management, refurbishment and demolition surveys of all building types
- Preparation of asbestos management plans
- Consultancy re asbestos on refurbishment / demolition projects including planning and advice on best practice
- Management of asbestos removals works including preparation of specifications, procurement of licenced removal contractors, arranging analytical works and the supervision and sign-off of removals works on-site.

Our management team boasts over 60 years' experience of practical asbestos consultancy between them. They are supported by our field operations team of project managers and lead surveyors. All our lead surveyors are required to sit the British Institute of Occupational Hygienists (BOHS) P402 module, Building Surveys and Bulk Sampling for Asbestos and are trained to carry out surveying in accordance with our in house quality procedures.

Global Environmental is a UKAS accredited inspection body.

**Global Safety & Environmental Limited**

Address: 11 Bakers Walk, Sawbridgeworth, Herts CM21 9QE

Tel: 01279 213 600

Email: [info@globalenvironmental.co.uk](mailto:info@globalenvironmental.co.uk)

Web: [www.globalenvironmental.co.uk](http://www.globalenvironmental.co.uk)

